



**Certified Professional in Patient Safety**

**Candidate Handbook**

**June 2018**



## TABLE OF CONTENTS

ABOUT THE EXAMINATION . . . . .	2	MISCONDUCT. . . . .	6
TESTING AGENCY . . . . .	2	COPYRIGHTED EXAMINATION QUESTIONS . . . . .	6
NONDISCRIMINATION POLICY . . . . .	2	COMPUTER LOGIN . . . . .	6
EXAMINATION ADMINISTRATION . . . . .	2	PRACTICE EXAMINATION . . . . .	6
INTERNATIONAL EXAMINATION SERVICES. . . . .	2	TIMED EXAMINATION . . . . .	6
TEST CENTER LOCATIONS. . . . .	2	CANDIDATE COMMENTS . . . . .	7
SPECIAL ARRANGEMENTS FOR CANDIDATES WITH DISABILITIES. . . . .	3	FOLLOWING THE EXAMINATION . . . . .	7
EXAMINATION FEES. . . . .	3	SCORES CANCELLED BY CBPPS OR PSI . . . . .	7
REGISTERING FOR AN EXAMINATION. . . . .	3	PASS/FAIL SCORE DETERMINATION. . . . .	7
PREPARING FOR THE EXAMINATION . . . . .	4	IF YOU PASS THE EXAMINATION. . . . .	7
RESCHEDULING AN EXAMINATION. . . . .	4	IF YOU DO NOT PASS THE EXAMINATION . . . . .	7
MISSED APPOINTMENTS AND FORFEITURES . . . . .	4	FAILING TO REPORT FOR AN EXAMINATION. . . . .	7
INCLEMENT WEATHER, POWER FAILURE OR EMERGENCY . . . . .	4	CONFIDENTIALITY. . . . .	7
TAKING THE EXAMINATION . . . . .	4	DUPLICATE SCORE REPORT . . . . .	7
IDENTIFICATION . . . . .	5	RECERTIFICATION . . . . .	8
SECURITY. . . . .	5	EXAMINATION APPLICATION. . . . .	9
PERSONAL BELONGINGS . . . . .	5	REQUEST FOR SPECIAL EXAMINATION ACCOMMODATIONS . . . . .	11
EXAMINATION RESTRICTIONS. . . . .	5	DOCUMENTATION OF DISABILITY-RELATED NEEDS. . . . .	12

All questions and requests for information about the  
CBPPS examination should be directed to:

Institute for Healthcare Improvement  
53 State Street, 19th Floor  
Boston, MA 02109  
Voice: 617-391-9927  
Email: [cbpps@ihi.org](mailto:cbpps@ihi.org)  
Website: [www.ihi.org/CBPPS](http://www.ihi.org/CBPPS)

All questions and requests for information about  
examination scheduling should be directed to:

PSI Candidate Services  
18000 W. 105th St.  
Olathe, KS 66061-7543  
Phone: 888-519-9901  
Fax: 913-895-4650  
Website: [www.goAMP.com](http://www.goAMP.com)

## ABOUT THE EXAMINATION

The Certified Professional in Patient Safety (CPPS) credential distinguishes health care professionals who meet the competency requirements in the areas of patient safety science and human factors engineering, and who demonstrate the ability to apply this knowledge to effectively plan and implement patient safety initiatives. Candidates may include patient safety professionals, clinicians, non-clinical health care workers, executives, and other professionals with the requisite background.

The certification exam is a rigorous and comprehensive credentialing process consisting of 110 questions, 100 of which are scored. The other 10 are pretest questions. You will be asked to answer these questions, but they will not be factored into your scored examination result. These pretest questions are dispersed within the examination and are not marked in any way. This ensures candidates answer pretest questions in the same manner as scored questions, allowing the pretest questions to be validated as accurate and appropriate before being included as a measure of candidate competency.

There are three types of questions on the exam:

- Recall: The ability to recall or recognize specific information
- Application: The ability to comprehend, relate or apply knowledge to new or changing situations
- Analysis: The ability to analyze and synthesize information, determine solutions and/or evaluate the usefulness of a solution

Only a small percentage of the exam questions are categorized as recall. The rest are divided between application and analysis.

The examination is available in a computerized format on a daily basis at PSI Test Centers across the United States and internationally.

## TESTING AGENCY

PSI Services is engaged in educational and occupational measurement and provides examination development and administration to a variety of client organizations. PSI assists the Certification Board for Professionals in Patient Safety (CBPPS) in the development, administration, scoring and analysis of the Certified Professional in Patient Safety (CPPS) examination.

PSI Services has more than 70 years of experience providing worldwide testing solutions to corporations, federal and state government agencies, professional associations, certifying bodies and leading academic institutions. PSI offers a comprehensive solutions approach from test devel-

opment to delivery to results processing, including pre-hire employment selection, managerial assessments, licensing and certification tests, distance learning testing, license management services and professional services.

## NONDISCRIMINATION POLICY

PSI does not discriminate among candidates on the basis of age, gender, race, color, religion, national origin, disability, marital status or any other protected characteristic.

## EXAMINATION ADMINISTRATION

Examinations are delivered by computer at approximately 300 PSI Test Centers located throughout the United States. The examination is administered by appointment only Monday through Friday. Saturday appointments may be scheduled based on availability. Appointment starting times may vary by location. Available dates will be indicated when scheduling your examination. Candidates are scheduled on a first-come, first-served basis.

## INTERNATIONAL EXAMINATION SERVICES

For information regarding the availability of international computerized test centers, please visit [www.goAMP.com](http://www.goAMP.com). If you are an international candidate, you will need to submit a completed application form and the application fee. All rules and regulations regarding the computerized examination apply to international examinations. Examinations will be given in computerized format only. International candidates will not receive instant score reports. Results will be sent within two business days after completion of the examination to the candidate's address of record.

## TEST CENTER LOCATIONS

PSI Test Centers have been selected to provide accessibility to the most candidates in all states and major metropolitan areas. A current listing of PSI Test Centers, including addresses and driving directions, may be viewed at the [www.goAMP.com](http://www.goAMP.com) website. Specific address information will be provided when you schedule an examination appointment.

## SPECIAL ARRANGEMENTS FOR CANDIDATES WITH DISABILITIES

PSI complies with the Americans with Disabilities Act and strives to ensure that no individual with a disability (as defined by the ADA as a person who has a physical or mental impairment that substantially limits one or more major life activities, a person who has a history or record of such an impairment, or a person who is perceived by others as having such an impairment) is deprived of the opportunity to take the examination solely by reason of that disability. PSI will provide reasonable accommodations for candidates with disabilities. Candidates requesting special accommodations must call PSI at 888-519-9901 to schedule their examination.

1. Wheelchair access is available at all established Test Centers. Candidates must advise PSI at the time of scheduling that wheelchair access is necessary.
2. Candidates with visual, sensory, physical or learning disabilities that would prevent them from taking the examination under standard conditions may request special accommodations and arrangements and will be reviewed by PSI.

Verification of the disability and a statement of the specific type of assistance needed **must be made in writing to PSI** at least 45 calendar days prior to your desired examination date by completing the two-page *Request for Special Examination Accommodations* form. PSI will review the submitted forms and will contact you regarding the decision for accommodations.

## EXAMINATION FEES

American Society of Professionals in Patient Safety Members:	\$295*
Stand Up for Patient Safety Members:	\$320*
Non-members:	\$400*

Payment may be made by credit card (VISA, MasterCard, American Express, or Discover), cashier's check, company check, or money order made payable to PSI Services Inc. Personal checks are not accepted. **Examination registration fees are not refundable or transferrable and expire in one year.**

Credit card transactions that are declined will be subject to a \$25 handling fee. A cashier's check or money order for the amount due, including the handling fee, must be sent to PSI to cover declined credit card transactions.

\* International candidates, please add \$100 (U.S. dollars) for international examination fee.

## REGISTERING FOR AN EXAMINATION

1. **Online:** You may register online by going to [www.goAMP.com](http://www.goAMP.com) and selecting "Candidates." The computer will guide you through the process. After your application information and credit card payment (VISA, MasterCard, American Express, or Discover) have been submitted, you will be prompted to schedule an examination appointment or to supply additional eligibility information.
2. **Paper:** Complete and mail the paper application included in this handbook with appropriate fee (credit card, cashier's check or money order). An application is considered complete only if all information requested is complete, legible and accurate; if you are eligible for the examination; and if the appropriate fee accompanies the application.

Approximately two weeks after receipt, PSI will send you a confirmation notice including a unique identification number, a website address and toll-free telephone number to schedule an examination appointment (see following table). If your eligibility cannot be confirmed, notification why your application is incomplete will be sent. If you do not receive information about your application within four weeks, call PSI at 888-519-9901.

If you contact PSI by 3:00 p.m. Central Time on...	Depending on availability, your examination may be scheduled as early as...
Monday	Wednesday
Tuesday	Thursday
Wednesday	Friday/Saturday
Thursday	Monday
Friday	Tuesday

When you schedule your examination appointment, be prepared to confirm a location and a preferred date and time for testing. You will be asked to provide your unique identification number. When you call or go online to schedule your examination appointment, you will be notified of the time to report to the Test Center, and if an email address is provided, you will be sent an email confirmation notice.

If special accommodations are being requested, complete the *Request for Special Examination Accommodations* and *Documentation of Disability-Related Needs* forms included in this handbook and submit it to PSI at least 45 days prior to the desired examination date.

## PREPARING FOR THE EXAMINATION

The method of preparation and amount of time spent preparing for the examination can be driven by the candidate's study preferences, level of professional and relevant experience, or academic background. Some methods of preparation may include, but are not limited to:

### Review of the Content Outline and Resource List

Review the content categories and related tasks. Identify and focus review on tasks that you do not perform regularly or with which you are less familiar.

Review the resource list curated by The Expert Oversight Committee and other subject matter experts. Identify and focus review on resources that cover content areas with which you are less familiar.

Remember that most questions in the CPPS Examination are job-related/experience-based and test the application and analysis of information rather than just the recall of facts.

Both the CPPS Examination Content Outline and Resource List can be found at [www.ihp.org/CPPS](http://www.ihp.org/CPPS).

### Complete the Self-Assessment Examination (SAE)

A Self-Assessment Examination (SAE) or practice exam is an online tool created by the CBPPS to simulate the CPPS Examination. The SAE is available for purchase at <http://store.lxr.com/dept.aspx?id=127>.

The 50-question online practice exam was developed using the same procedures as the examination, and conforms to examination specifications in content, cognitive levels, format, and difficulty. Feedback reports from the SAE show performance by domain and can be helpful in directing study and use of resources. The questions presented in the SAE are different from the questions contained on the certification examination.

## RESCHEDULING AN EXAMINATION

You may reschedule your appointment ONCE at no charge by calling PSI at 888-519-9901 at least 2 business days prior to your scheduled appointment. The following schedule applies.

If the examination is scheduled on...	PSI must be contacted by 3:00 p.m. Central Time to reschedule the examination by the previous...
Monday	Wednesday
Tuesday	Thursday
Wednesday	Friday
Thursday	Monday
Friday/Saturday	Tuesday

## MISSED APPOINTMENTS AND FORFEITURES

You will forfeit your examination registration and all fees paid to take the examination under the following circumstances. A new, complete application and examination fee are required to reapply for examination.

- You cancel your examination after confirmation of eligibility is received.
- You wish to reschedule an examination but fail to contact PSI at least two business days prior to the scheduled testing session.
- You wish to reschedule a second time.
- You appear more than 15 minutes late for an examination.
- You fail to report for an examination appointment.

## INCLEMENT WEATHER, POWER FAILURE OR EMERGENCY

In the event of inclement weather or unforeseen emergencies on the day of an examination, PSI will determine whether circumstances warrant the cancellation, and subsequent rescheduling, of an examination. The examination will usually not be rescheduled if the Test Center personnel are able to open the Test Center.

You may visit the [www.goAMP.com](http://www.goAMP.com) website prior to the examination to determine if PSI has been advised that any Test Centers are closed. Every attempt is made to administer the examination as scheduled; however, should an examination be canceled at a Test Center, all scheduled candidates will receive notification following the examination regarding rescheduling or reapplication procedures.

If power to a Test Center is temporarily interrupted during an administration, your examination will be restarted. The responses provided up to the point of interruption will be intact, but for security reasons the questions will be scrambled.

## TAKING THE EXAMINATION

Your examination will be given by computer at a PSI Test Center. You do not need any computer experience or typing skills to take your examination. On the day of your examination appointment, report to the Test Center no later than your scheduled testing time. Once you arrive at the location, look for signs indicating PSI Test Center check-in. **IF YOU ARRIVE MORE THAN 15 MINUTES AFTER THE SCHEDULED TESTING TIME, YOU WILL NOT BE ADMITTED.**

## IDENTIFICATION

To gain admission to the Test Center, you must present two forms of identification. The primary form must be government issued, current and include your name, signature and photograph. No form of temporary identification will be accepted. You will also be required to sign a roster for verification of identity.

- Examples of valid primary forms of identification are: driver's license with photograph; state identification card with photograph; passport; military identification card with photograph.
- The secondary form of identification must display your name and signature for signature verification (e.g., credit card with signature, social security card with signature, employment/student ID card with signature).
- If your name on your registration is different than it appears on your identification, you must bring proof of your name change (e.g., marriage license, divorce decree or court order).

Candidates must have proper identification to gain admission to the Test Center. Failure to provide appropriate identification at the time of the examination is considered a missed appointment. There will be no refund of examination fees.

## SECURITY

PSI administration and security standards are designed to ensure all candidates are provided the same opportunity to demonstrate their abilities. The Test Center is continuously monitored by audio and video surveillance equipment for security purposes.

The following security procedures apply during the examination:

- Examinations are proprietary. No cameras, notes, tape recorders, pagers or cellular/smart phones are allowed in the testing room. Possession of a cellular/smart phone or other electronic devices is strictly prohibited and will result in dismissal from the examination.
- Only silent, nonprogrammable calculators without alpha keys or printing capabilities are allowed in the testing room if needed.
- No guests, visitors or family members are allowed in the testing room or reception areas.

## PERSONAL BELONGINGS

No personal items, valuables or weapons should be brought to the Test Center. Only wallets and keys are permitted. Large coats and jackets must be left outside the testing room. You will be provided a soft locker to store your wallet and/or keys with you in the testing room. The proctor will lock the soft locker prior to you entering the testing room. You will not have access to these items until after the examination is completed. Please note the following items will not be allowed in the testing room except securely locked in the soft locker.

- watches
- hats
- wallets
- keys

Once you have placed your personal belongings into the soft locker, you will be asked to pull out your pockets to ensure they are empty. If you bring personal items that will not fit in the soft locker, you will not be able to test. The site will not store or be responsible for your personal belongings.

If any personal items are observed or heard (e.g., cellular/smart phones, alarms) in the testing room after the examination is started, you will be dismissed and the administration will be forfeited.

## EXAMINATION RESTRICTIONS

- Pencils will be provided during check-in.
- You will be provided with one piece of scratch paper at a time to use during the examination. You must return the scratch paper to the supervisor at the completion of testing, or you will not receive your score report.
- No documents or notes of any kind may be removed from the Test Center.
- No questions concerning the content of the examination may be asked during the examination.
- Eating, drinking or smoking will not be permitted in the Test Center.
- You may take a break whenever you wish, but you will not be allowed additional time to make up for time lost during breaks.

## MISCONDUCT

If you engage in any of the following conduct during the examination, you may be dismissed, your scores will not be reported and examination fees will not be refunded. Examples of misconduct are when you:

- create a disturbance, are abusive, or otherwise uncooperative;
- display and/or use electronic communications equipment such as pagers, cellular/smart phones;
- talk or participate in conversation with other examination candidates;
- give or receive help or are suspected of doing so;
- leave the Test Center during the administration;
- attempt to record examination questions or make notes;
- attempt to take the examination for someone else;
- are observed with personal belongings; or
- are observed with notes, books or other aids without it being noted on the roster.

## COPYRIGHTED EXAMINATION QUESTIONS

All examination questions are copyrighted. It is forbidden under federal copyright law to copy, reproduce, record, distribute or display these examination questions by any means, in whole or in part. Doing so may subject you to severe civil and criminal penalties.

## COMPUTER LOGIN

After your identification has been confirmed, you will be directed to a testing carrel. You will be instructed on screen to enter your unique identification number. Your photograph, taken before beginning the examination, will remain on screen throughout your examination session. This photograph will also print on your score report.

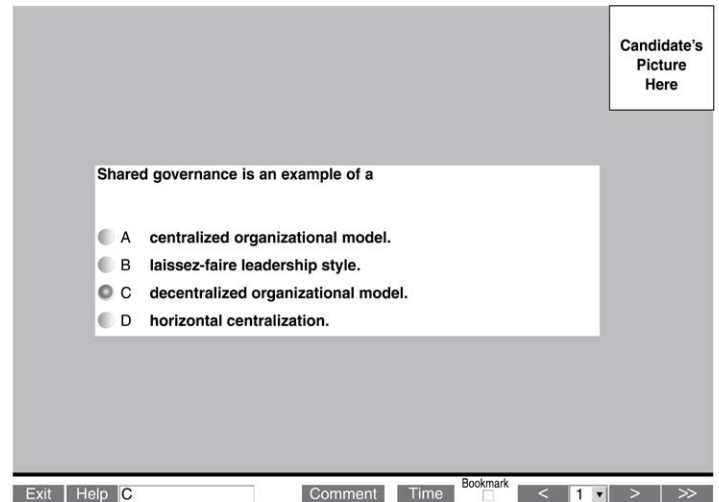
## PRACTICE EXAMINATION

Prior to attempting the examination, you will be given the opportunity to practice taking an examination on the computer. The time you use for this practice examination is NOT counted as part of your examination time or score.

When you are comfortable with the computer testing process, you may quit the practice session and begin the timed examination.

## TIMED EXAMINATION

Following the practice examination, you will begin the timed examination. There are 100 items plus 10 pretest items on the examination. You will have 2 hours to complete the examination. Before beginning, instructions for taking the examination are provided on screen.



The computer monitors the time you spend on the examination. The examination will terminate if you exceed the time allowed. You may click on the "Time" box in the lower menu bar on the screen to monitor your time. A digital clock indicates the time remaining for you to complete the examination. The Time feature may be turned off during the examination.

Only one examination question is presented at a time. The question number appears in the lower right of the screen. Choices of answers to the examination question are identified as A, B, C, or D. You must indicate your choice by either typing in the letter in the response box in the lower left portion of the computer screen or clicking on the option using the mouse. To change your answer, enter a different option by typing A, B, C, or D or by clicking on the option using the mouse. You may change your answer as many times as you wish during the examination time limit.

To move to the next question, click on the forward arrow (>) in the lower right portion of the screen. This action will move you forward through the examination question by question. If you wish to review any question or questions, click the backward arrow (<) or use the left arrow key to move backward through the examination.

An examination question may be left unanswered for return later in the examination session. Questions may also be bookmarked for later review by clicking in the blank square to the right of the Time button. Click on the double arrows (>>) to advance to the next unanswered or bookmarked



question on the examination. To identify all unanswered and bookmarked questions, repeatedly click on the double arrows (>>). When the examination is completed, the number of examination questions answered is reported. If not all questions have been answered and there is time remaining, return to the examination and answer those questions. Be sure to provide an answer for each examination question before ending the examination. There is no penalty for guessing.

## **CANDIDATE COMMENTS**

During the examination, you may make comments for any question by clicking on the Comment button to the left of the Time button. This opens a dialogue box where comments may be entered. Comments will be reviewed, but individual responses will not be provided.

## **FOLLOWING THE EXAMINATION**

After completing the examination, you are asked to complete a short evaluation of your examination experience. Then, you are instructed to report to the examination proctor to receive an examination completion report.

## **SCORES CANCELLED BY CBPPS OR PSI**

PSI is responsible for the validity and integrity of the scores they report. On occasion, occurrences, such as computer malfunction or misconduct by a candidate, may cause a score to be suspect. CBPPS and PSI reserve the right to void or withhold examination results if, upon investigation, violation of its regulations is discovered.

## **PASS/FAIL SCORE DETERMINATION**

CBPPS uses a criterion-referenced methodology in scoring the certification examination. With this type of scoring methodology, there is no “curve,” and candidates do not compete against one another. Instead, candidate performance is compared to the criterion of acceptable practice of a qualified patient safety professional. The passing score for the examination is determined by using a process known as the Angoff method, in which experts in the field estimate the difficulty of each item on the examination for the minimally qualified candidate. These judgments are averaged to determine the minimum passing score, which represents the amount of knowledge a minimally qualified candidate would likely demonstrate on the examination. A statistical process called equating is used to adjust for the slight variations in difficulty that can occur among multiple test forms (versions of the examination). These steps help ensure that all candidates are held to the same standard of performance.

Scaled scores are reported to emphasize that although different forms of the examination may have slight differences in difficulty, the passing score for an examination is based on a consistent level of performance. Scaled scores are computed by setting the raw passing score equal to the scaled score required to pass. The scaled score is not the same as a percentage. The raw passing score may vary slightly between forms, depending on the difficulty of the items on the form; however, the scaled score required to pass (and the level of knowledge required to pass) does not change. This process is used to ensure fairness to all candidates.

## **IF YOU PASS THE EXAMINATION**

If you pass the examination, you will be able to use the CPPS designation to indicate certification status. Recertification will be required every three years.

## **IF YOU DO NOT PASS THE EXAMINATION**

Unsuccessful candidates who wish to retake the examination must wait 30 days before reapplying to PSI and remit all applicable fees and documentation.

## **FAILING TO REPORT FOR AN EXAMINATION**

If you fail to report for an examination, you will forfeit the registration and all fees paid to take the examination. A completed application form and examination fee is required to reapply for examination.

## **CONFIDENTIALITY**

Information about candidates for testing and their examination results are considered confidential. Studies and reports concerning candidates will contain no information identifiable with any candidate, unless authorized by the candidate.

## **DUPLICATE SCORE REPORT**

You may purchase additional copies of your results at a cost of \$25 per copy. Requests must be submitted to PSI in writing. The request must include your name, unique identification number, mailing address, telephone number, date of examination and examination taken. Submit this information with the required fee payable to PSI Services Inc. in the form of a money order or cashier’s check. Duplicate score reports will be mailed within approximately five business days after receipt of the request and fee. Requests must be submitted within one year of your examination to be processed.

## RECERTIFICATION

Following successful completion of the CPPS examination, the certificant is required to maintain certification by fulfilling continuing education (CE) requirements, or through successful retest.

Recertification cycle: 3 years

CE requirement: 45 hours total

Accepted types of CE:

- All CE that follows the CPPS content outline is accepted.
- CE options include: education programs, self-study, CPPS item writing, academic coursework, and more.

For detailed recertification guidelines and forms visit [www.ihp.org/CPPS](http://www.ihp.org/CPPS).

# CERTIFIED PROFESSIONAL IN PATIENT SAFETY (CPPS) EXAMINATION APPLICATION

This form is to be used for exams given at established PSI Test Centers only.  
To apply for the CPPS examination, complete this application and return it with the examination fee to:  
PSI • CPPS Examination • 18000 W. 105th St. • Olathe, KS 66061-7543  
Fax: 913-895-4650

## PERSONAL INFORMATION

Name: First \_\_\_\_\_ MI \_\_\_\_\_ Last \_\_\_\_\_  
 Title: \_\_\_\_\_  
 Organization: \_\_\_\_\_  
 Date of Birth: \_\_\_\_\_  
 Address: \_\_\_\_\_  
 State: \_\_\_\_\_ Zip: \_\_\_\_\_ Country: \_\_\_\_\_  
 Email: \_\_\_\_\_ Phone: \_\_\_\_\_

## ELIGIBILITY FOR EXAMINATION

Patient safety practices as an integral component of current or future professional responsibilities, in addition to:

- Baccalaureate degree or higher plus 3 years of experience (includes time spent in clinical rotations and residency programs) in a health care setting or with a provider of services to the health care industry
- Associate degree or equivalent plus 5 years of experience (includes time spent in clinical rotations) in a health care setting or with a provider of services to the health care industry

## APPLICATION STATUS

- I am applying as a new candidate.
- I am applying as a reapplicant. – Candidates are required to wait 30 days between attempts of the examination.

## MEMBERSHIP STATUS AND EXAMINATION FEE

### Membership Status

To be eligible for the reduced CPPS examination fee, a candidate must be a current member of American Society of Professionals in Patient Safety (ASPPS).

For information on joining ASPPS, visit the ASPPS website at [www.aspps.org](http://www.aspps.org). Membership must be obtained before application for examination at the reduced fee can be honored.

Enter your membership number: \_\_\_\_\_

If your membership cannot be verified, you will be billed for the difference in examination fee.

### Examination Fee

Payment may be made by credit card, company check, cashier’s check or money order payable to PSI Services Inc. **Personal checks are not accepted.**

- ASPPS Member . . . . . \$295 (U.S. dollars)\*
- Stand Up for Patient Safety Member: . . . . \$320 (U.S. dollars)\*
- Non-member: . . . . . \$400 (U.S. dollars)\*

\*International candidates, add \$100 (U.S. dollars) for international fee.

If payment is made by credit card, complete the following:

- VISA    MasterCard    American Express
- Discover

Credit Card Number \_\_\_\_\_ Expiration Date \_\_\_\_\_

Your Name as it Appears on the Card \_\_\_\_\_

Signature \_\_\_\_\_

## SPECIAL ACCOMMODATIONS

Do you require special disability related accommodations during testing?

- No    Yes

If yes, please complete the *Request for Special Examination Accommodations* and *Documentation of Disability-Related Needs* forms included with this handbook and submit it with an application and fee at least 45 days prior to the desired testing date. Specific information about special accommodations is provided in the handbook.

## DEMOGRAPHIC INFORMATION

Responses to these questions will be used by CPPS only in the aggregate to evaluate the CPPS Certification Program. (Select only one response unless directed otherwise.)

1. Please Indicate:

- Male
- Female

2. Indicate years in the health care industry:

- 3-5 years
- 6-10 years
- 11-15 years
- 16-20 years
- 21-30 years
- 30+ years

3. Which of the following best describes your organization?

- Academic Medical Center
- Ambulatory Care Facility
- Consulting Practice
- Group Practice
- Health Care Association/Society
- Health Care Solutions Provider/Supplier/Manufacturer
- Health Plan
- Hospital/Health System
- Military Health Care Facility
- Physician Office
- Other Health Care Organization
- Other \_\_\_\_\_

4. Which of the following best describes the approximate size of your organization (Full Time Employees)?

- 1-100
- 101-250
- 251-500
- 501-1,000
- 1,001-5,000
- More than 5,000
- Not Applicable

5. Which of the following best describes your discipline?

- Administration
- Education
- Environmental Services
- Finance/Business
- Governance/Regulatory Services
- Health Information Management
- Human Resources
- Information Technology
- Medicine
- Nursing
- Patient Care Services
- Patient Safety
- Pharmacy
- Physical Therapy
- Quality Management
- Rehabilitation Services
- Respiratory Therapy
- Risk Management
- Social Work/Case Management
- Supply Chain Management
- Other \_\_\_\_\_

6. Which of the following best describes your job category?

- Administrator
- Analyst
- Board Member
- Clinician
- Coordinator
- Department Head
- Director
- Executive
- Frontline Staff
- Manager
- Safety/Quality Officer
- Technician
- Technologist
- Therapist
- Other \_\_\_\_\_

7. Please list credentials earned:

\_\_\_\_\_

8. Please indicate for which of the below you are seeking this credential:

- Current position
- Future position

## SIGNATURE

I certify that I agree to abide by regulations of the CPPS program contained in this handbook. I believe that I comply with all admission policies for the CPPS examination. I certify that the information I have submitted in this application is complete and correct to the best of my knowledge and belief. I understand that, if the information I have submitted is found to be incomplete or inaccurate, my application may be rejected or my examination results may be delayed or voided.

Name (Please Print): \_\_\_\_\_

Signature: \_\_\_\_\_ Date: \_\_\_\_\_



# REQUEST FOR SPECIAL EXAMINATION ACCOMMODATIONS

If you have a disability covered by the Americans with Disabilities Act, please complete this form and provide the Documentation of Disability-Related Needs on the next page so your accommodations for testing can be processed efficiently. The information you provide and any documentation regarding your disability and your need for accommodation in testing will be treated with strict confidentiality. Please return this form to PSI within 45 days of the desired testing date.

## CANDIDATE INFORMATION

\_\_\_\_\_  
Name (Last or Family Name, First, Middle Initial, Former Name)

\_\_\_\_\_  
Mailing Address

\_\_\_\_\_

\_\_\_\_\_  
City State/Province Zip Code/Postal Code and Country

\_\_\_\_\_  
Daytime Telephone Number with country code if outside of North America

## SPECIAL ACCOMMODATIONS

I request special accommodations for the \_\_\_\_\_ examination.

Please provide (check all that apply):

- Reader
- Extended examination time (time and a half)
- Reduced distraction environment
- Large print examination (paper and pencil administration only)
- Circle answers in examination booklet (paper and pencil administration only)
- Other special accommodations (Please specify.)

\_\_\_\_\_  
\_\_\_\_\_  
\_\_\_\_\_

Comments: \_\_\_\_\_  
\_\_\_\_\_  
\_\_\_\_\_

### PLEASE READ AND SIGN:

I give my permission for my diagnosing professional to discuss with PSI staff my records and history as they relate to the requested accommodation.

Signature: \_\_\_\_\_ Date: \_\_\_\_\_

Return this form with your examination application and fee to:  
PSI, 18000 W. 105th St., Olathe, KS 66061-7543, Fax 913-895-4650.  
If you have questions, call Candidate Services at 888-519-9901.



## DOCUMENTATION OF DISABILITY-RELATED NEEDS

Please have this section completed by an appropriate professional (education professional, physician, psychologist, psychiatrist) to ensure that PSI is able to provide the required examination accommodations.

### PROFESSIONAL DOCUMENTATION

I have known \_\_\_\_\_ since \_\_\_\_/\_\_\_\_/\_\_\_\_ in my capacity as a  
Candidate Name Date (month/date/year)

\_\_\_\_\_  
Professional Title

The candidate discussed with me the nature of the examination to be administered. It is my opinion that, because of this candidate's disability described below, he/she should be accommodated by providing the special arrangements listed on the Request for Special Examination Accommodations form.

Description of Disability: \_\_\_\_\_  
 \_\_\_\_\_  
 \_\_\_\_\_  
 \_\_\_\_\_

Signed: \_\_\_\_\_ Title: \_\_\_\_\_

Printed Name: \_\_\_\_\_

Address: \_\_\_\_\_  
 \_\_\_\_\_

Telephone Number: \_\_\_\_\_

Date: \_\_\_\_\_ License # (if applicable): \_\_\_\_\_

**Return this form with your examination application and fee to:  
 PSI, 18000 W. 105th St., Olathe, KS 66061-7543, Fax 913-895-4650.  
 If you have questions, call Candidate Services at 888-519-9901.**



